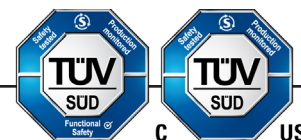






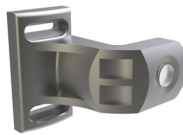


Operating Instructions: Actuators



Actuators

Description	TAF	TAH	TAS
TAF - Fixed Actuator <ul style="list-style-type: none">Fixed Actuator suitable for mounting on either sliding or hinged doors. TAH / TAS - Handle Actuators <ul style="list-style-type: none">Handle actuators suitable for bracket-less mounting to either hinged (TAH) or sliding (TAS) doors.4mm misalignment feature.TAH actuator can be converted to a TAS actuator on site, and vice versa. THB - Handle Blank <ul style="list-style-type: none">Blank handle (without actuator) for use on inside of doors. TEH / TEN - Handle Actuators <ul style="list-style-type: none">Intuitive handle actuator giving latching feature on hinged doors.4mm misalignment feature.Rear of actuator can hold up to 8mm padlocks.Handling can be changed on site.Prevents interlock being used as mechanical stop as per standard.TEH internal knob allows actuator to be retracted but not extended. TNH - High Level Coded RF Actuator <ul style="list-style-type: none">RF actuator with tolerance for misalignment.To be used with tGard High Level Coded element.			
	THB	TEN	TEH
			
	TNH		
			

Note: The internal knob on TEH handle only opens an already unlocked device and does not release the solenoid or lock mechanism. A TRX/Z (escape release element) must be used to deliver escape release functionality, in combination with a THM head element and selected actuator.

tGard Actuators Technical Specifications	
Housing Materials	Painted die cast aluminium
Colour	Dark Grey
Ambient Temperature	-25°C to 40°C (-13°F to 104°F)
Environment	Indoor use only
Actuator Material	Stainless Steel TNH LED Window - glass reinforced nylon
Retention Force	2500N
Mechanical Life	1,000,000 Operations
Maximum Frequency of Ops	1 per second

Safety Data		
Applied Standards	BS EN ISO 13849-1:2015 BS EN ISO 13849-2:2012 BS EN ISO 14119:2013 BS EN 62061:2005 UL 508/R:2013-10	
Certifications	CE marked for all applicable directives, cTUVus	
Category	Up to Cat. 3 / PLd / SIL2 (EN/ISO 13849-1) Up to PLe / Cat. 4 / SIL3 where tGard High Level Coded element is used	
Functional Safety Data	B10d (for whole tGard device, which will contain multiple elements)	5,000,000

Operating Instructions: Actuators

tGard Actuators Safety Related Functions		Part No.			
Function 1	Provides mechanical link from interlock to moveable guard	TAF	TAH / TAS	TEN / TEH	
Function 2	Internal handle allows egress				
Function 3	Provides RF link from interlock to moveable guard				TNH

Figure 1: Dimensional Drawing - TAF

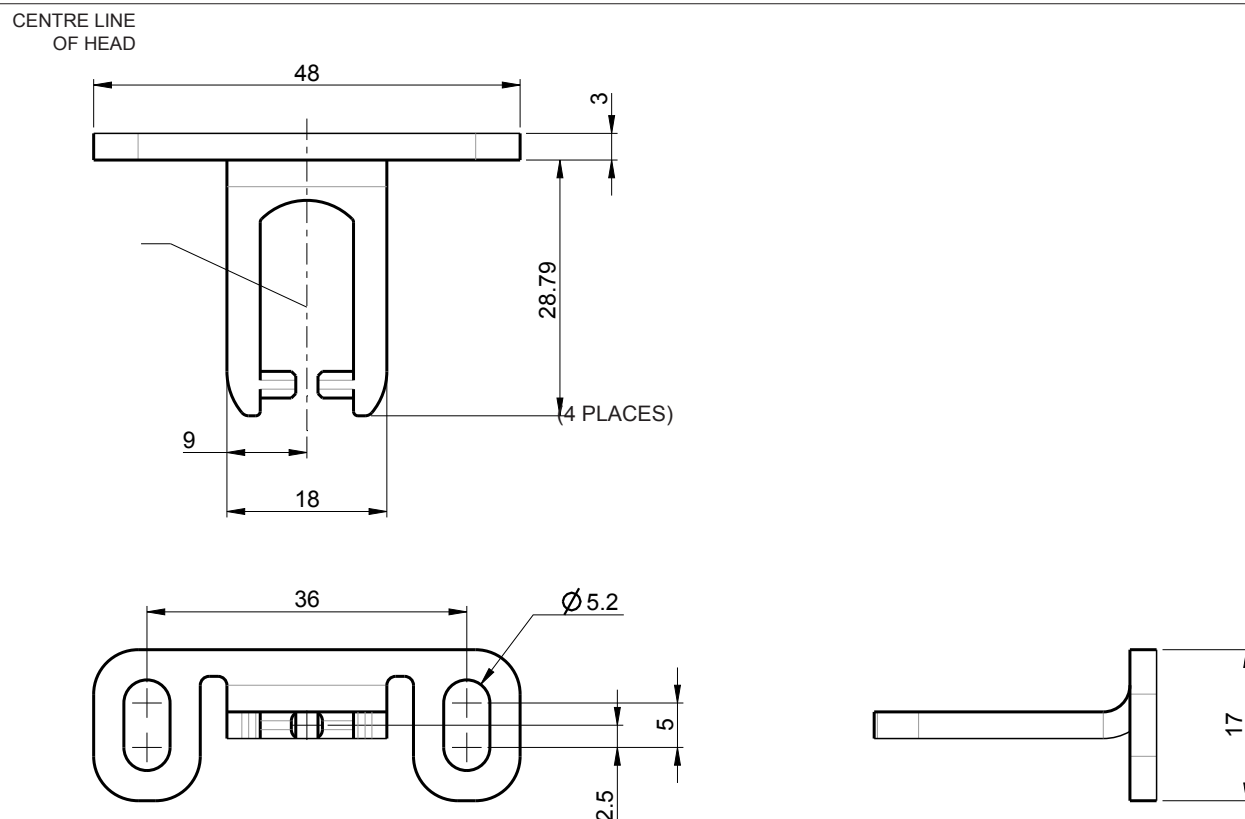


Figure 2: Dimensional Drawing - THB

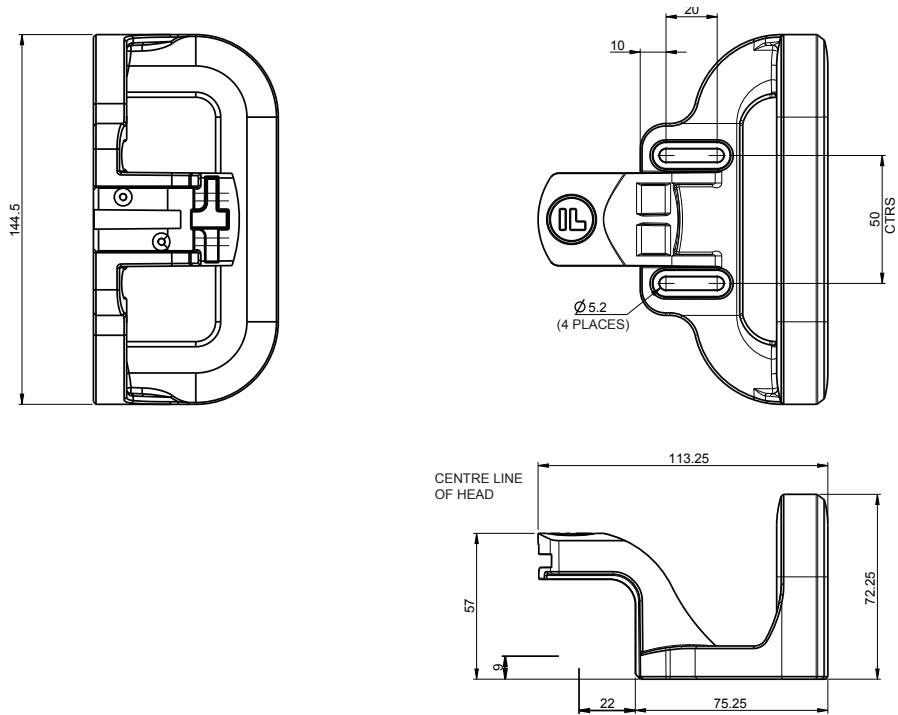


Figure 3: Dimensional Drawing - TAH

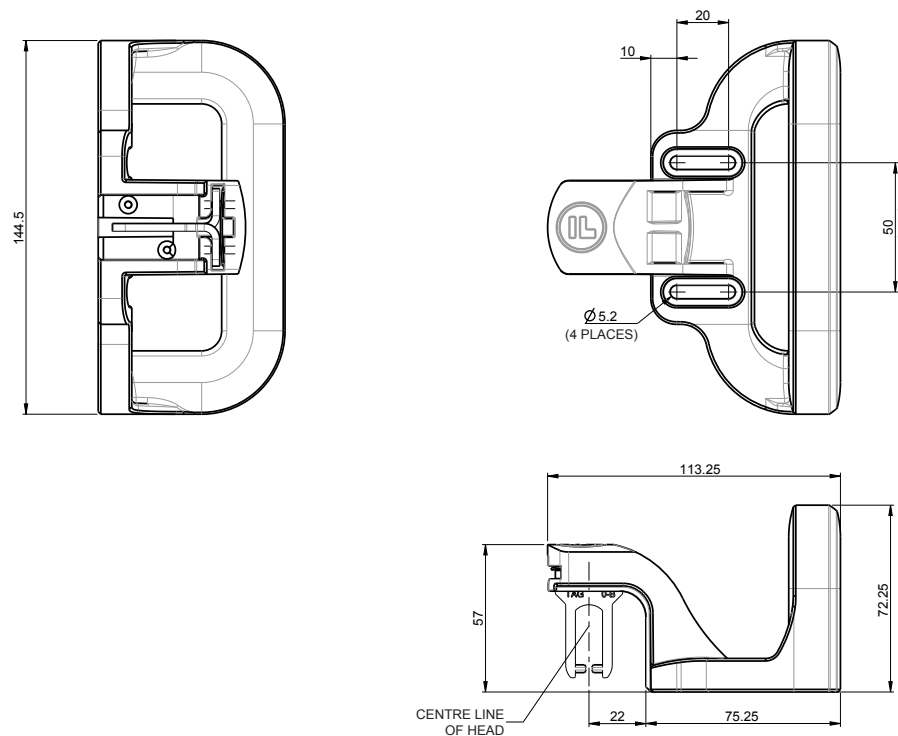


Figure 4: Dimensional Drawing - TEN

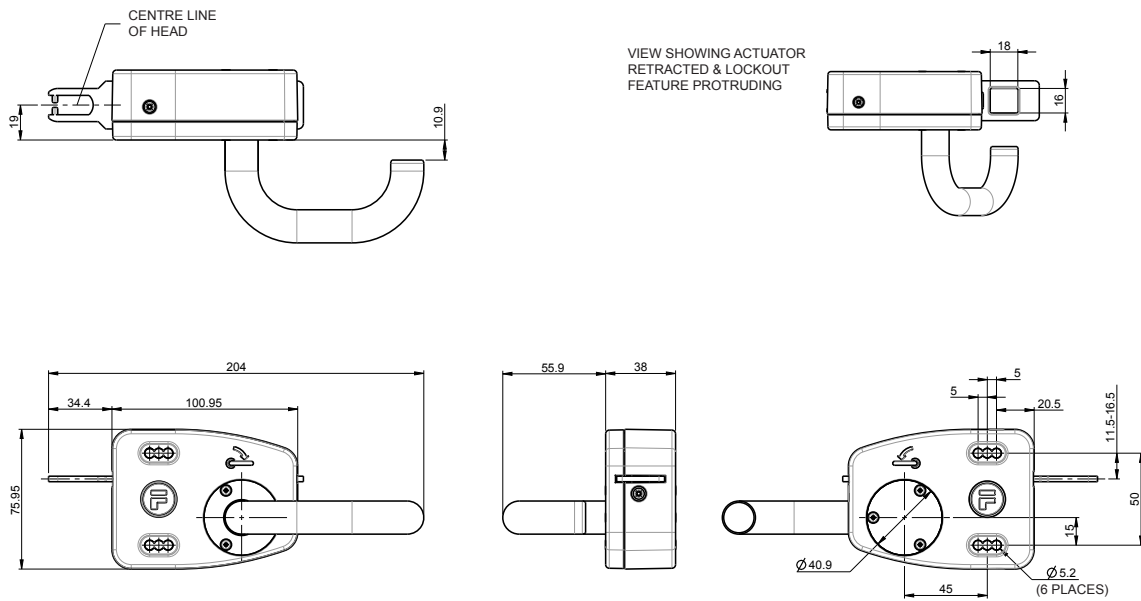
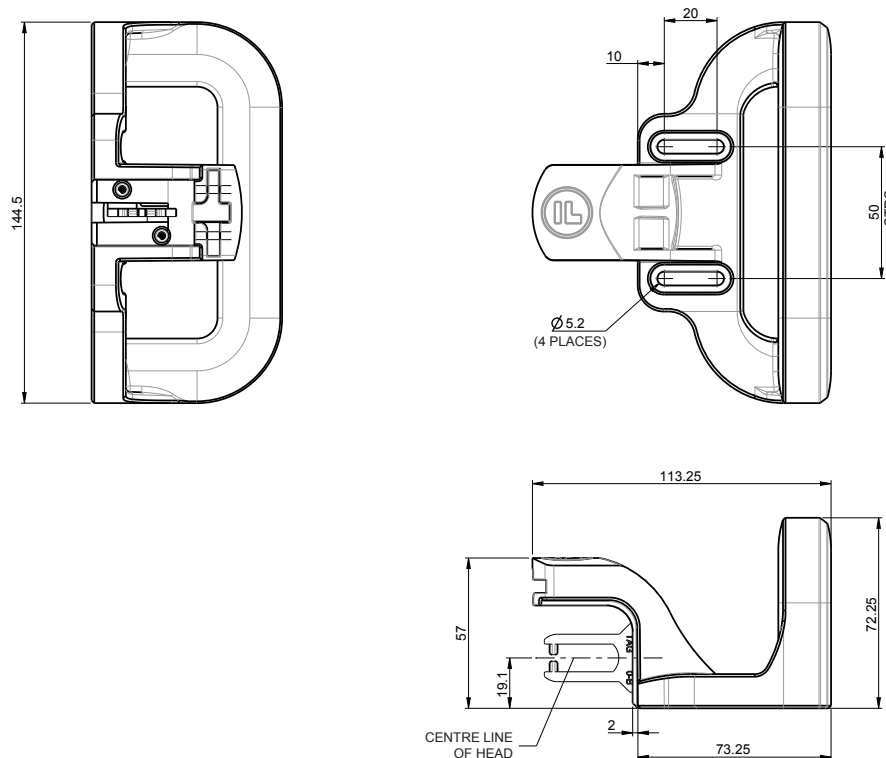


Figure 5: Dimensional Drawing - TAS



Operating Instructions: Actuators

Figure 6: Dimensional Drawing - TEH

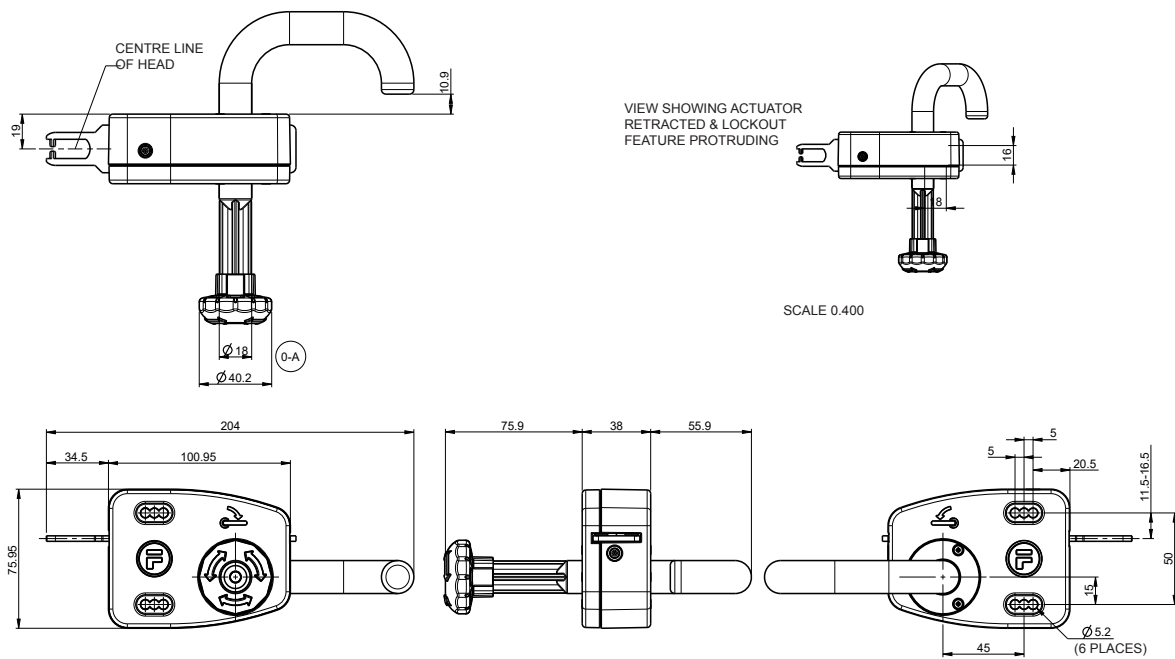


Figure 7: Dimensional Drawing - TNH Actuator

