



SSP

Safety System Products

ZEUS 01-01 11 00

Enabling/operating unit

Your advantages

- Robust housing in IP65 and IP67
- Modular construction
- Ergonomic design
- Combination of enabling button and operating unit
- Universal connection with fixed cable



[To the downloads ►](#)

we simplify safety



Safety System Products

ZEUS 01-01 11 00

ZEUS guarantees fatigue free activity, thanks to an ergonomical design and low weight. It is suitable for left and right handed persons and easily operated with gloves.

With its way to function the 3-Step-Enabling Switch ZEUS creates ideal safety conditions in your enabling operation.

General data

| | |
|-----------------|--|
| Item number | SP-X-85-902-42 |
| Functional type | Enabling and operating unit |
| Standards | EMV: DIN EN 55011:2009 + A1:2010, DIN EN 61000-4-3:2006 + A1:2008 + A2:2010, DIN EN 61000-4-6:2009 |

Safety data

| | |
|-----------|-------------|
| Approvals | TÜV, CE, UL |
|-----------|-------------|

Environmental conditions

| | |
|---|---|
| Max. storage temperature | -40 ...+80 °C |
| Max. operating temperature | -5 ... +60 °C |
| Clearance and creepage distances according to IEC/EN 606641 | Overvoltage category: 3 // Contamination level: III |
| UL Enclosure Type Rating | Type 1 |

Electrical data

| | |
|----------------|-------------------------------|
| Supply voltage | DC ± 5% 24 V DC Ie DC: 1 A |
|----------------|-------------------------------|

we simplify safety

ZEUS 01-01 11 00

| | |
|--|--|
| B10d-value | Enabling button: 100.000 |
| Enabling switch | |
| Rated operational voltage U _e | DC: 30 V |
| Rated operational current | I _e DC: 1 A |
| position 2 | 4 N bis 30 N |
| Position 3 | < 30 N |
| Rated operational voltage U _e | DC: 30 V |
| Rated operational current I _e | I _e DC: 1 A |
| Actuating force | |
| Position 1 | > 4 N |
| Position 2 | 4 N bis 30 N |
| Terminal block | |
| Connection cross-section | 0,25-0,34 mm ² |
| Number per terminal point | 7 |
| Pollution degree | 2 |
| Rated operating voltage U _e | DC: 30 V |
| Rated current | DC: 1 A |
| Cable diameter | M12 (3,5 - 7 mm) / M16 (4,5 - 10 mm) |
| Screw connection | M12 / M16 |
| Tensile strength of the connection | 20 Nm |
| Terminal block | 3 |
| Mechanical data | |
| Enabling button material | Silicon |
| Base plate | With mounting bracket: only for use with the ZEUS H (SP-X-85-800-00) // screw connections: M20 internal thread |
| Connection material | PUR according to UL, black |
| Length | 71 mm |
| Width | 69 mm |
| Height | 186 mm |
| Housing material | PA6.6 30% GF, colour: black |
| Material for base plate | V2A |

ZEUS 01-01 11 00

Mechanical service life 100.000 switching cycles

Screw torque 0,8 Nm

Dimensions

Mechanical tests

Partial test I

Standard DIN EN 60068-2-6

Frequency range 10 - 150 Hz

Deflection 0,35 mm/5 g ± 15 % an der Regelstelle

Frequency cycles 20

Tuning speed 1 Oktave/min

Partial test II

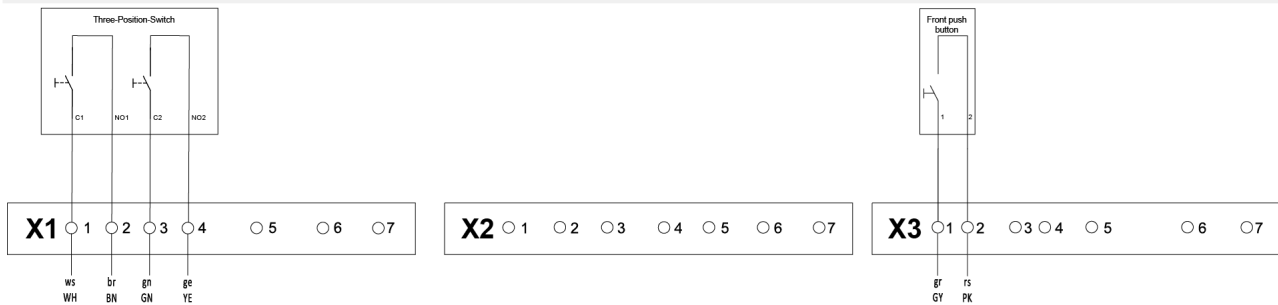
Standard DIN EN 60068-2-6

Partial test III

Standard DIN EN 60068-2-6

Electrical drawings

Pin assignment 1



Equipment

Safe control technology

MOSAIC M1

SP-R-11-000-00



ZEUS 01-01 11 00

Standard safety relay 1 safety function

S2 series

SP-K-70-001-00



Multi-function safety relay 2 safety functions

X2 series

SP-K-70-001-03



Operating elements

Universal hook

SP UH-K



Holding bracket for ZEUS with holding hook

ZEUS H

SP-X-85-800-00



Additional hook set for Zeus enabling-/operating unit

ZEUS ZHS

SP-X-85-801-00



Downloads

- Operating manual
- Catalog
- Software Gateway
- Product line
- Certificate
- Certificate UL
- CAD Data