



SSP

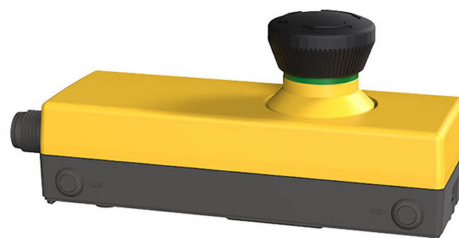
Safety System Products

EDI B7S

Stop button in slimline housing (M12-4 pin)

Your advantages

- Robust design
- Fast mounting on aluminum profiles (without the use of mounting plates)
- User-friendly status display via coloured marking of the stop button
- Fast commissioning and fast replacement with M12 plug connectors



To the downloads ►

we simplify safety

EDI B7S

The EDI emergency stop buttons have a modular design.

Select the head, contact and if desired the corresponding housing or simply immediately select the EDI slimline variant in a slimline housing. The special feature of the EDI buttons is the optionally available self-monitoring contact.

To help maintain safety, the switching elements in the emergency stop buttons/emergency off buttons are fitted with a safety contact. This constantly monitors the proper connection between the emergency stop button/emergency off button and the contact element. Even redundant, secure emergency off chains are ineffective if the contact is not perfectly connected to the emergency off actuator. If the emergency stop button/emergency off button becomes disconnected from the contact element due to negligent installation or mechanical damage, the safety contact trips immediately and the machine is shut down. The machine can only be placed into operation again when the fault has been rectified.

General data

Item number	SP-G-61-000-03
Functional type	Stop button in slimline housing (M12-4 pin)

Safety data

Approvals	CE
-----------	----

Environmental conditions

Max. storage temperature	-25 ... +70 °C
Max. operating temperature	-25 ... +80 °C

Electrical data

Design / Connections	M12 8-pin (m)
Bounce time	< 10
Contact material	AgNi
Test voltage	2.0 kV

EDI B7S


Switching capacity	1.1Ie
Continuous thermal current	2.5 A
Direct opening	according to EN60947-5-1, Annex K
Direct opening path	> 3 mm
Sensor type	2 NC contacts (positively opening)

Mechanical data

Mounting	Clip at the rear
Mechanical service life	50,000 switching cycles

Equipment

Safe control technology

	MOSAIC M1	SP-R-11-000-00	
Standard safety relay 1 safety function	S2 series	SP-K-70-001-00	
Time delay safety relay 1 safety function	T2 series	SP-K-70-001-02	

Downloads

- Certificate
- CAD Data
- Product line
- Operating Manual