



# SSP

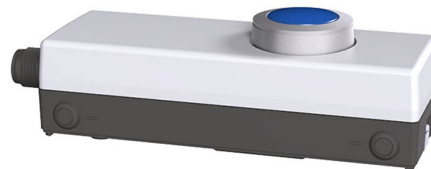
Safety System Products

## EDI D1B

### Reset button in slimline housing (M12-4 pin)

#### Your advantages

- Robust design
- Fast mounting on aluminum profiles (without the use of mounting plates)
- User-friendly status display via coloured marking of the reset button
- Fast commissioning and fast replacement with M12 plug connectors



**To the downloads ►**

**we simplify safety**

## EDI D1B

The EDI emergency stop buttons have a modular design.

Select the head, contact and if desired the corresponding housing or simply immediately select the EDI slimline variant in a slimline housing. The special feature of the EDI buttons is the optionally available self-monitoring contact.

To help maintain safety, the switching elements in the emergency stop buttons/emergency off buttons are fitted with a safety contact. This constantly monitors the proper connection between the emergency stop button/emergency off button and the contact element. Even redundant, secure emergency off chains are ineffective if the contact is not perfectly connected to the emergency off actuator. If the emergency stop button/emergency off button becomes disconnected from the contact element due to negligent installation or mechanical damage, the safety contact trips immediately and the machine is shut down. The machine can only be placed into operation again when the fault has been rectified.

### General data

Functional type	Reset button in slimline housing (M12-4 pin)
Item number	SP-G-61-000-09

### Safety data

Approvals	TÜV_SÜD, CE
-----------	-------------

### Environmental conditions

Max. storage temperature	-25 ... +70 °C
Max. operating temperature	-25 ... +80 °C

### Electrical data

Design / Connections	M12 4-pin (m), pin 1-2 lamp, pin 3 (X1 +) 4 (X2 -)
Bounce time	< 10ms
Contact material	AgNi
Test voltage	2.0 kV
Rated operating voltage Ue	240V / 120V 250V / 125V / 60V / 24 V
Sensor type	1 illuminated closing contact

### EDI D1B

Rated operating current I <sub>N</sub>	1.5A / 3A 0.27A / 0.55A / 1A / 2 A
--	------------------------------------

#### Mechanical data

Mounting	Clip at the rear
----------	------------------

#### Equipment

Safe control technology	
-------------------------	--

MOSAIC M1

SP-R-11-000-00



Standard safety relay 1 safety function

S2 series

SP-K-70-001-00



Time delay safety relay 1 safety function

T2 series

SP-K-70-001-02



#### Downloads

- CAD-Data
- Certificate
- Product line
- Operating Manual